

HURRICANES AND CLIMATE: THE U.S. CLIVAR WORKING GROUP ON HURRICANES

KEVIN J. E. WALSH, SUZANA J. CAMARGO, GABRIEL A. VECCHI, ANNE SOPHIE DALOZ, JAMES ELSNER, KERRY EMANUEL, MICHAEL HORN, YOUNG-KWON LIM, MALCOLM ROBERTS, CHRISTINA PATRICOLA, ENRICO SCOCCIMARRO, ADAM H. SOBEL, SARAH STRAZZO, GABRIELE VILLARINI, MICHAEL WEHNER, MING ZHAO, JAMES P. KOSSIN, TIM LAROW, KAZUYOSHI OOUCHI, SIEGFRIED SCHUBERT, HUI WANG, JULIO BACMEISTER, PING CHANG, FABRICE CHAUVIN, CHRISTIANE JABLONOWSKI, ARUN KUMAR, HIROYUKI MURAKAMI, TOMOAKI OSE, KEVIN A. REED, RAMALINGAM SARAVANAN, YOHEI YAMADA, COLIN M. ZARZYCKI, PIER LUIGI VIDALE, JEFFREY A. JONAS, AND NAOMI HENDERSON

In Walsh et al. (2015), the caption for panel b of Fig. 3 was phrased incorrectly. The figure, with the correctly worded caption, appears below.

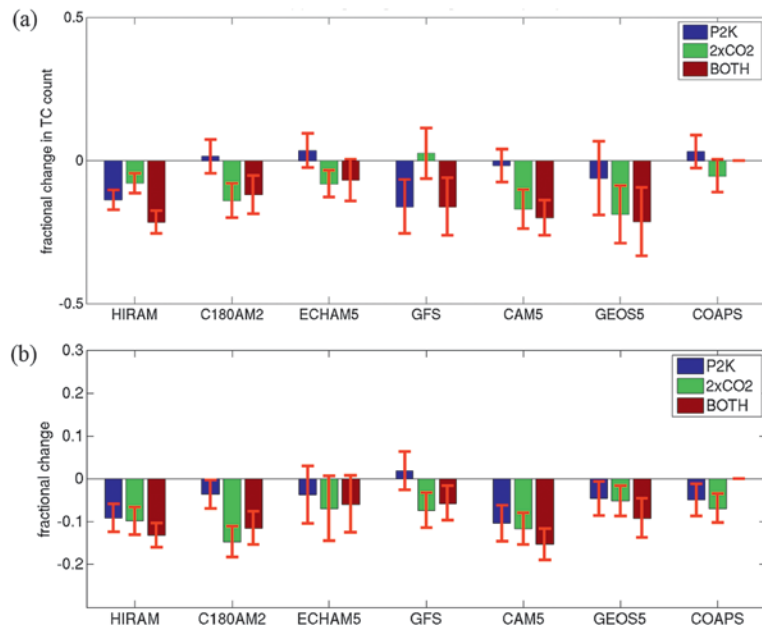


FIG. 3. Comparison between changes in (a) TC formation for various models for the 2K (P2K) and 2CO₂ experiments vs (b) changes in midtropospheric vertical velocity as weighted by TC genesis, as described in the text. (From Zhao et al. 2013a.)

REFERENCE

Walsh, K. J. E., and Coauthors, 2015: Hurricanes and Climate: The U.S. CLIVAR Working Group on Hurricanes. *Bull. Amer. Meteor. Soc.*, **96**, 997–1017, doi:10.1175/BAMS-D-13-00242.1.

AFFILIATIONS: WALSH AND HORN—University of Melbourne, Parkville, Victoria, Australia; CAMARGO, SOBEL, AND HENDERSON—Lamont-Doherty Earth Observatory, Columbia University, Palisades, New York; VECCHI, ZHAO, AND MURAKAMI—Geophysical Fluid Dynamics Laboratory, Princeton, New Jersey; DALOZ—Space Science and Engineering Center, University of Wisconsin—Madison, Madison, Wisconsin; ELSNER, STRAZZO, AND LAROW—Florida State University, Tallahassee, Florida; EMANUEL—Massachusetts Institute of Technology, Cambridge, Massachusetts; LIM—Global Modeling and Assimilation Office, NASA Goddard Space Flight Center, and Goddard Earth Sciences Technology and Research, and I. M. Systems Group, Greenbelt, Maryland; ROBERTS—Met Office, Exeter, United Kingdom; PATRICOLA, CHANG, AND SARAVANAN—Texas A&M University, College Station, Texas; SCOCCIMARRO—Istituto Nazionale di Geofisica e Vulcanologia, and Centro Euro-Mediterraneo sui Cambiamenti Climatici, Bologna, Italy; VILLARINI—University of Iowa, Iowa City, Iowa; WEHNER—Lawrence Berkeley National Laboratory, Berkeley, California; KOSSIN—NOAA/NCDC,

Asheville, North Carolina; OOUCHI AND YAMADA—JAMSTEC, Yokohama, Kanagawa, Japan; SCHUBERT—Global Modeling and Assimilation Office, NASA Goddard Space Flight Center, Greenbelt, Maryland; WANG AND KUMAR—NOAA/NCEP, College Park, Maryland; BACMEISTER AND REED—National Center for Atmospheric Research, Boulder, Colorado; CHAUVIN—Météo-France, Toulouse, France; JABLONOWSKI AND ZARZYCKI—University of Michigan, Ann Arbor, Michigan; OSE—Meteorological Research Institute, Japan Meteorological Agency, Tsukuba-city, Ibaraki, Japan; VIDALE—University of Reading, Reading, United Kingdom; JONAS—NASA Goddard Institute for Space Studies, and Columbia University, New York, New York

CORRESPONDING AUTHOR: Kevin Walsh, School of Earth Sciences, University of Melbourne, Parkville VIC 3010, Australia
E-mail: kevin.walsh@unimelb.edu.au

DOI:10.1175/BAMS-D-15-00232.1

In final form 27 August 2015
©2015 American Meteorological Society