

CORRIGENDUM

G. RODER AND G. SOFIA

Department of Land, Environment, Agriculture and Forestry, University of Padova, Agripolis, Italy

Z. WU

School of Geographical Sciences, Guangzhou University, Guangzhou, China

P. TAROLLI

Department of Land, Environment, Agriculture and Forestry, University of Padova, Agripolis, Italy

(Manuscript received and in final form 18 October 2017)

In Roder et al. (2017) an error resulted in two regions' names, Piemonte and Lombardia, trading places in the bottom-right position of Figs. 6 and 8 on pages 724 and 727, respectively. The corrected figures are shown on the following pages.

REFERENCE

Roder, G., G. Sofia, Z. Wu, and P. Tarolli, 2017: Assessment of social vulnerability to floods in the floodplain of northern Italy. *Wea. Climate Soc.*, **9**, 717–737, <https://doi.org/10.1175/WCAS-D-16-0090.1>.

Corresponding author: Giulia Roder, giulia.roder@phd.unipd.it

DOI: 10.1175/WCAS-D-17-0104.1

© 2018 American Meteorological Society. For information regarding reuse of this content and general copyright information, consult the [AMS Copyright Policy](https://www.ametsoc.org/PUBSReuseLicenses) (www.ametsoc.org/PUBSReuseLicenses).

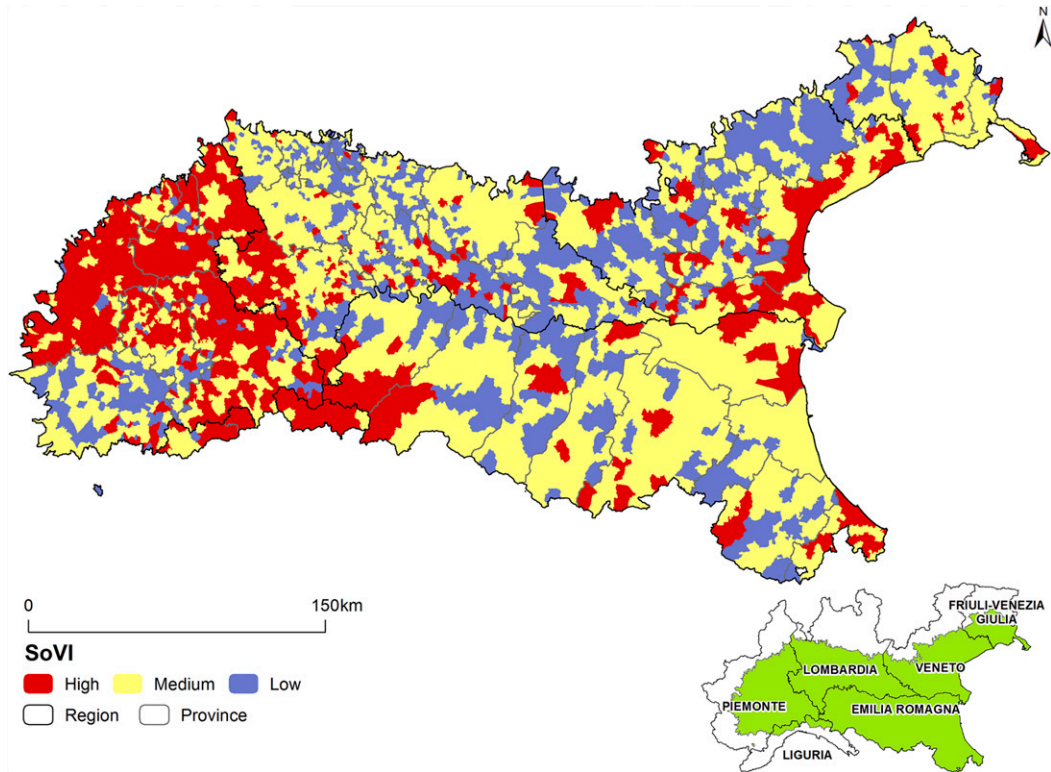


FIG. 6. Spatial distribution of the Social Vulnerability Index among the municipalities of the northern Italy floodplain classified into a three Jenks natural breaks classification. The lower right picture refers to the regional boundaries of the study area.

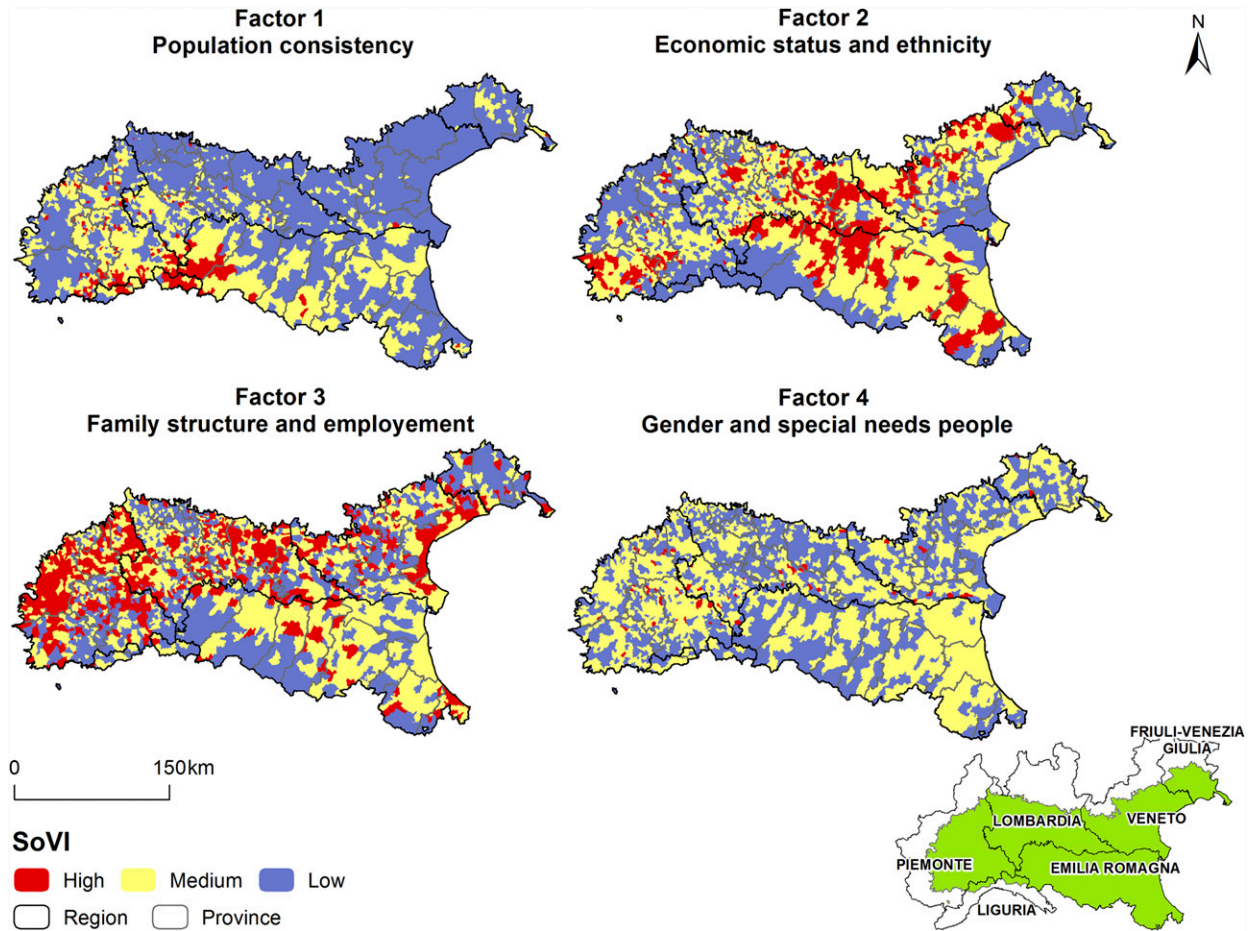


FIG. 8. SoVI maps of the four factors derived from the PCA analysis across the northern Italy floodplain. The bottom right picture refers to the regional boundaries of the study area.