

CORRIGENDUM

In the June 1994 issue of *Weather and Forecasting* Fig. 9 of “Potential Applications of the SSM/I Cloud Liquid Water Parameter to the Estimation of Marine Aircraft Icing,” by Thomas F. Lee and James R. Clark, should have appeared in color on page 178. Due to editorial and production errors the figure appeared in black and white. *Weather and Forecasting* apologizes for any confusion that may have occurred as a result of these errors. The color figure and caption appear below.

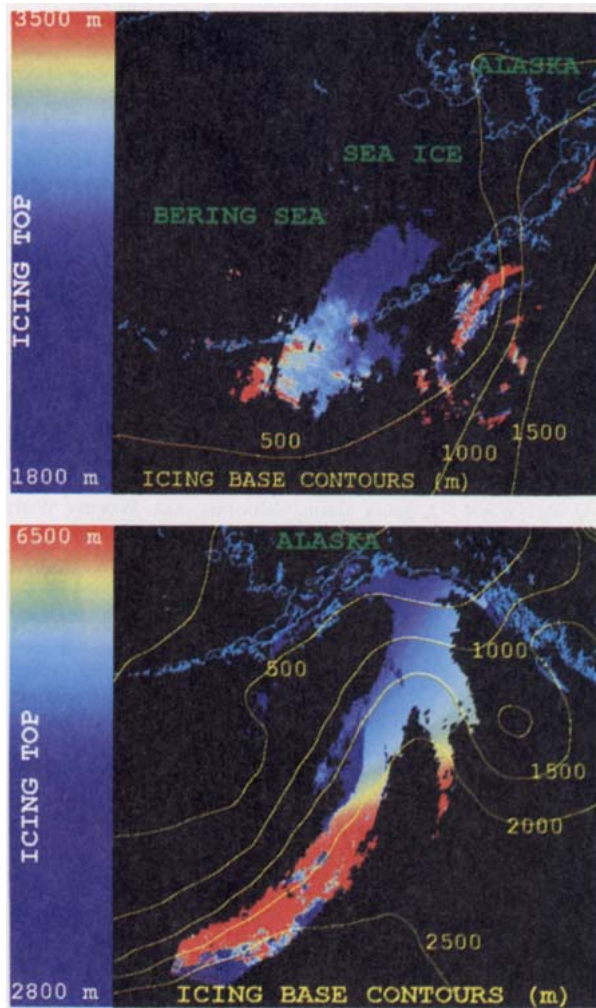


FIG. 9. Aircraft icing watch products for 24 March 1992 (top diagram; based in Figs. 6–7) and 9 March 1992 (bottom diagram; based in Figs. 3–4). Potential icing areas are color coded giving the maximum elevation of the threat (see color bar on the left). Yellow contours give the base of the threat.