



## CORRIGENDUM

OMAR V. MÜLLER

*CEVARCAM, Facultad de Ingeniería y Ciencias Hídricas, Universidad Nacional del Litoral and CONICET,  
Santa Fe, Argentina*

ERNESTO HUGO BERBERY

*Cooperative Institute for Climate and Satellites-Maryland, Earth System Science Interdisciplinary Center,  
University of Maryland, College Park, College Park, Maryland*

DOMINGO ALCARAZ-SEGURA

*Departamento de Botánica, Campus de Fuente Nueva, Universidad de Granada, Granada, Spain*

MICHAEL B. EK

*Environmental Modeling Center, NOAA/NCEP/NWS, College Park, Maryland*

(Manuscript received and in final form 30 June 2015)

---

An incorrect version of [Fig. 13a](#) was published in [Müller et al. \(2014\)](#). [Figure 13a](#) on page 6771 did not show the gray band representing the eastern region area-averaged 2-m temperature for CPC and OBS (Climate Prediction Center and Observations). The correct figure is provided here. We regret any inconvenience.

### REFERENCE

Müller, O. V., E. H. Berbery, D. Alcaraz-Segura, and M. B. Ek, 2014: Regional model simulations of the 2008 drought in southern South America using a consistent set of land surface properties. *J. Climate*, **27**, 6754–6778, doi:[10.1175/JCLI-D-13-00463.1](https://doi.org/10.1175/JCLI-D-13-00463.1).

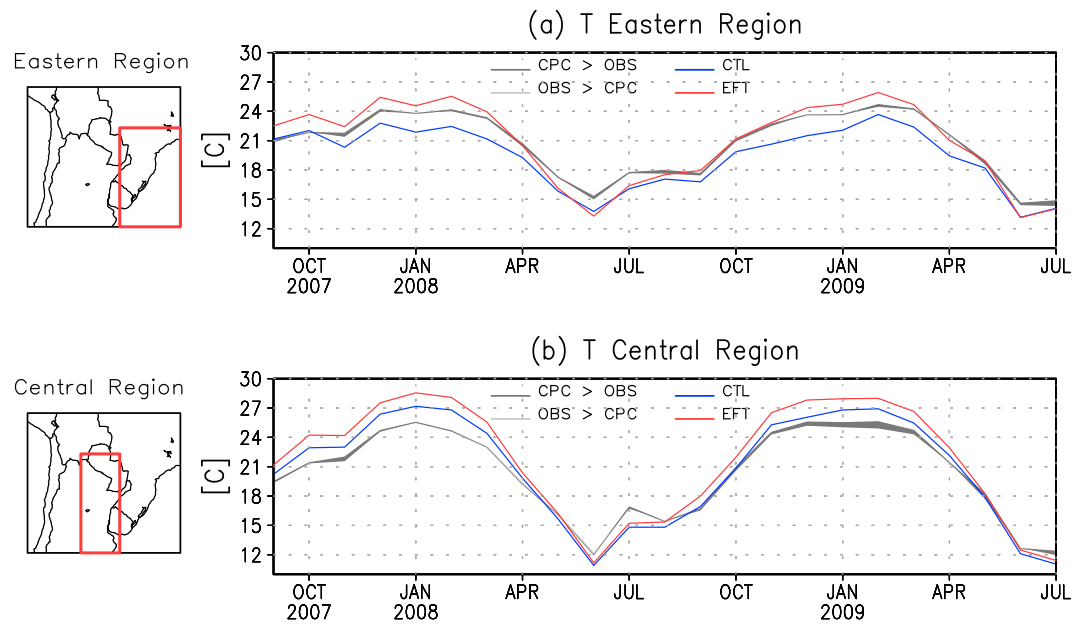


FIG. 13. Area-averaged 2-m temperature for CPC and OBS (their slight differences are shaded) CTL and EFT over two regions denoted to the left: (a) eastern region and (b) central region. Only data over land were considered.