

## CORRIGENDUM

MICHAEL P. BYRNE<sup>a,b</sup> AND LAURE ZANNA<sup>c,b</sup><sup>a</sup> *School of Earth and Environmental Sciences, University of St. Andrews, St. Andrews, United Kingdom*<sup>b</sup> *University of Oxford, Oxford, United Kingdom*<sup>c</sup> *Courant Institute of Mathematical Sciences, New York University, New York*

(Manuscript received and in final form 28 September 2020)

KEYWORDS: Large-scale motions; Monsoons; Climate change; Cloud radiative effects; Radiative fluxes; Water vapor

Our published paper (Byrne and Zanna 2020) contains an error in Fig. 5a. Instead of showing the simulated change in precipitation minus evaporation [ $\delta(P - E)$ ] between the  $S_{\text{var}}L_{\text{var}}W_{\text{var}}$  and  $S_{\text{fix}}L_{\text{fix}}W_{\text{fix}}$  simulations, the solid black line shows  $\delta(P - E)$  with the evaporation change calculated incorrectly between the C4S4L4W4 and C1S1L1W1 simulations [the precipitation component of  $\delta(P - E)$  is calculated correctly]. This error resulted from a bug in the analysis code. The simulations quoted above are described in Tables 1 and 2 of Byrne and Zanna (2020).

Here we present a corrected version of Fig. 5. The solid black line in Fig. 5a is marginally different from the corre-

sponding line in the original published figure, but the interpretations based on this figure and all conclusions of Byrne and Zanna (2020) are unaffected. The other panels (Figs. 5b,c,d) are unchanged.

*Acknowledgments.* We are grateful to Spencer Hill for pointing out this error.

## REFERENCES

Byrne, M. P., and L. Zanna, 2020: Radiative effects of clouds and water vapor on an axisymmetric monsoon. *J. Climate*, **33**, 8789–8811, <https://doi.org/10.1175/JCLI-D-19-0974.1>.

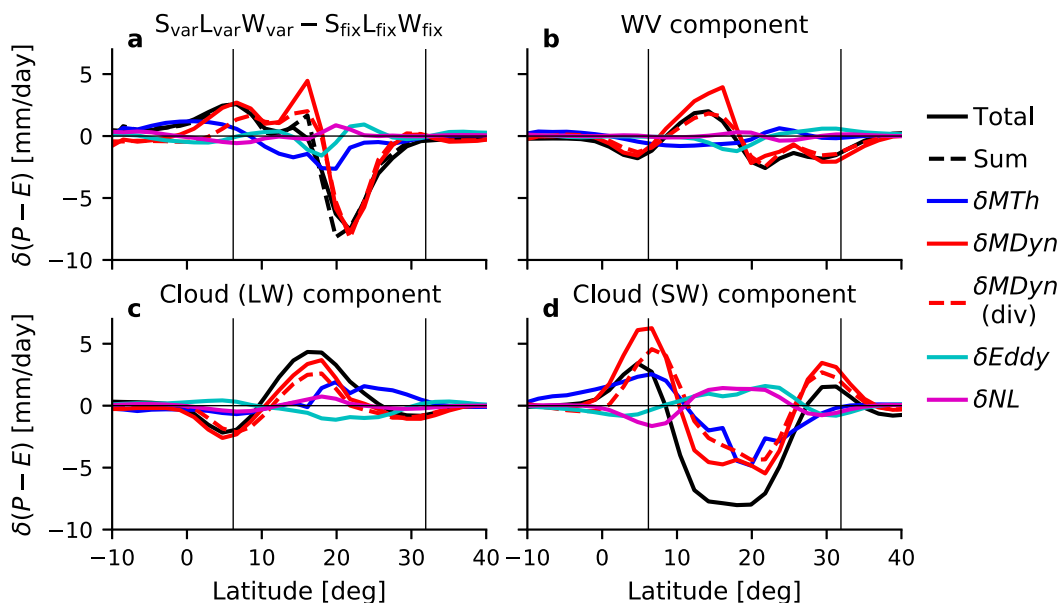


FIG. 5. A corrected version of Fig. 5 from Byrne and Zanna (2020).

Corresponding author: Michael P. Byrne, [mpb20@st-andrews.ac.uk](mailto:mpb20@st-andrews.ac.uk)

DOI: 10.1175/JCLI-D-20-0758.1

© 2021 American Meteorological Society. For information regarding reuse of this content and general copyright information, consult the AMS Copyright Policy ([www.ametsoc.org/PUBSReuseLicenses](http://www.ametsoc.org/PUBSReuseLicenses)).





