

Anthropogenic Influence on Hurricane Dorian's Extreme Rainfall

Kevin A. Reed, Michael F. Wehner, Alyssa M. Stansfield,
and Colin M. Zarzycki

<https://doi.org/10.1175/BAMS-D-20-0160.2>

Corresponding author: Kevin Reed, kevin.reed@stonybrook.edu

This document is a supplement to <https://doi.org/10.1175/BAMS-D-20-0160.1>

©2021 American Meteorological Society

For information regarding reuse of this content and general copyright information, consult the [AMS Copyright Policy](#).

AFFILIATIONS: **Reed and Stansfield**—School of Marine and Atmospheric Sciences, Stony Brook University, Stony Brook, New York; **Wehner**—Lawrence Berkeley National Laboratory, Berkeley, California; **Zarzycki**—Pennsylvania State University, State College, Pennsylvania

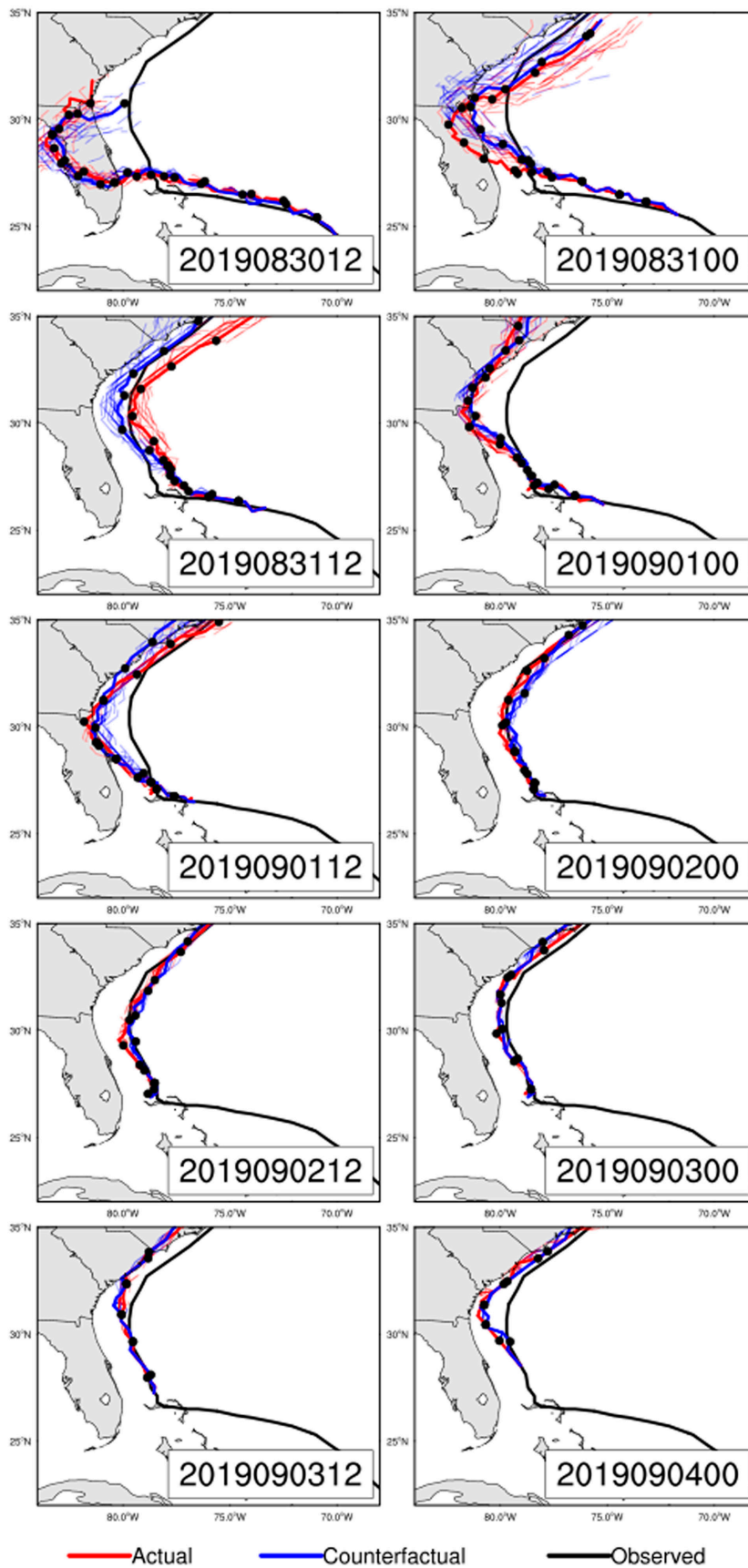


Fig. ES1. Simulated tracks of the 7-day actual and counterfactual ensembles for different initialization times. Solid lines are ensemble means with black dots representing the mean storm center at 12-h intervals and dashed lines represent the individual ensemble members. The NOAA Best Track is provided for observational reference.

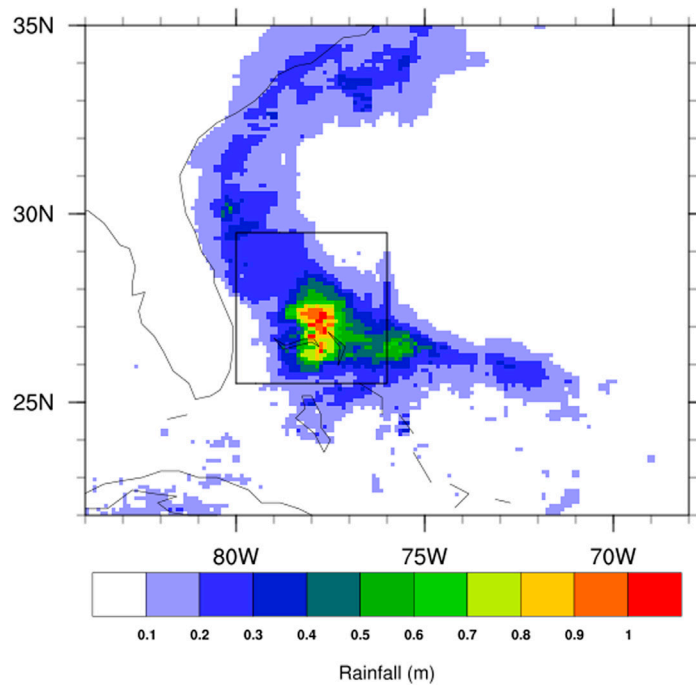


Fig. ES2. Total observed accumulated precipitation (m) during Hurricane Dorian as estimated by NASA IMERG. The Bahamas region is denoted (black outline).