



**AMS**  
American Meteorological Society

# Supplemental Material

*Journal of Climate*

Modulations of Storm-Track Activity Associated with the Baroclinic Annular Mode

<https://doi.org/10.1175/JCLI-D-22-0377.1>

© [Copyright 2023 American Meteorological Society](#) (AMS)

For permission to reuse any portion of this work, please contact [permissions@ametsoc.org](mailto:permissions@ametsoc.org). Any use of material in this work that is determined to be “fair use” under Section 107 of the U.S. Copyright Act (17 USC §107) or that satisfies the conditions specified in Section 108 of the U.S. Copyright Act (17 USC §108) does not require AMS’s permission. Republication, systematic reproduction, posting in electronic form, such as on a website or in a searchable database, or other uses of this material, except as exempted by the above statement, requires written permission or a license from AMS. All AMS journals and monograph publications are registered with the Copyright Clearance Center (<https://www.copyright.com>). Additional details are provided in the AMS Copyright Policy statement, available on the AMS website (<https://www.ametsoc.org/PUBSCopyrightPolicy>).

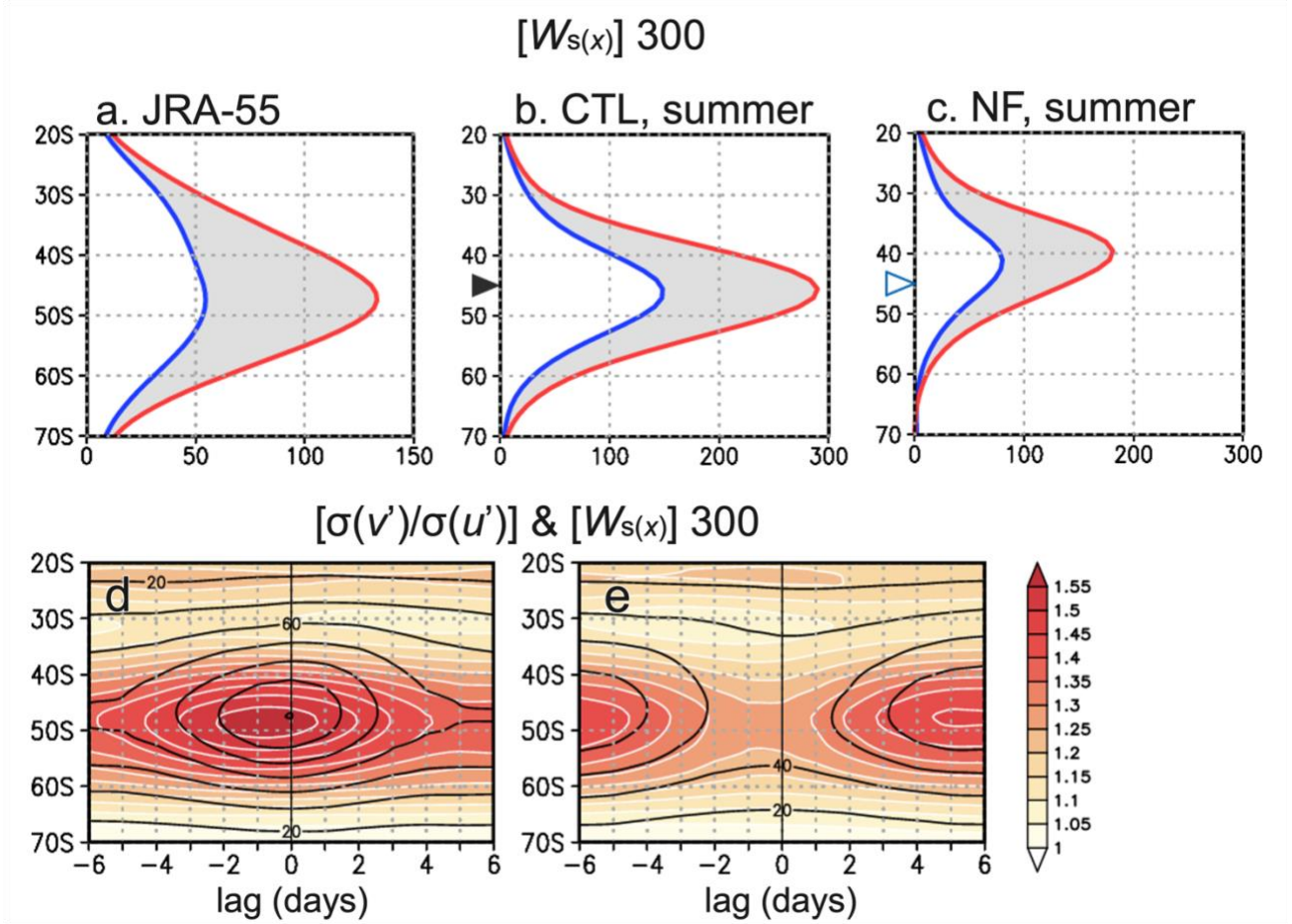


Fig. S1. As in Figs. 3g, 8o, 8p, 7e and 7f, respectively, but 8-day-lowpass-filtered horizontal wind is used as a basic state in calculating  $W_{s(x)}$ . In the figures on the article, climatological-mean horizontal wind is used as a basic state. This discrepancy yields no substantial differences qualitatively.