



AMS
American Meteorological Society

Supplemental Material

© [Copyright 2023 American Meteorological Society](https://www.ametsoc.org/) (AMS)

For permission to reuse any portion of this work, please contact permissions@ametsoc.org. Any use of material in this work that is determined to be “fair use” under Section 107 of the U.S. Copyright Act (17 USC §107) or that satisfies the conditions specified in Section 108 of the U.S. Copyright Act (17 USC §108) does not require AMS’s permission. Republication, systematic reproduction, posting in electronic form, such as on a website or in a searchable database, or other uses of this material, except as exempted by the above statement, requires written permission or a license from AMS. All AMS journals and monograph publications are registered with the Copyright Clearance Center (<https://www.copyright.com>). Additional details are provided in the AMS Copyright Policy statement, available on the AMS website (<https://www.ametsoc.org/PUBSCopyrightPolicy>).

Supplementary material for JCLI-D-22-0600, "Cloud and Precipitation in low-latitude extratropical cyclones conditionally sorted on CYGNSS surface latent and sensible heat fluxes" by Catherine M Naud, Juan A Crespo, Derek J Posselt, and James F Booth

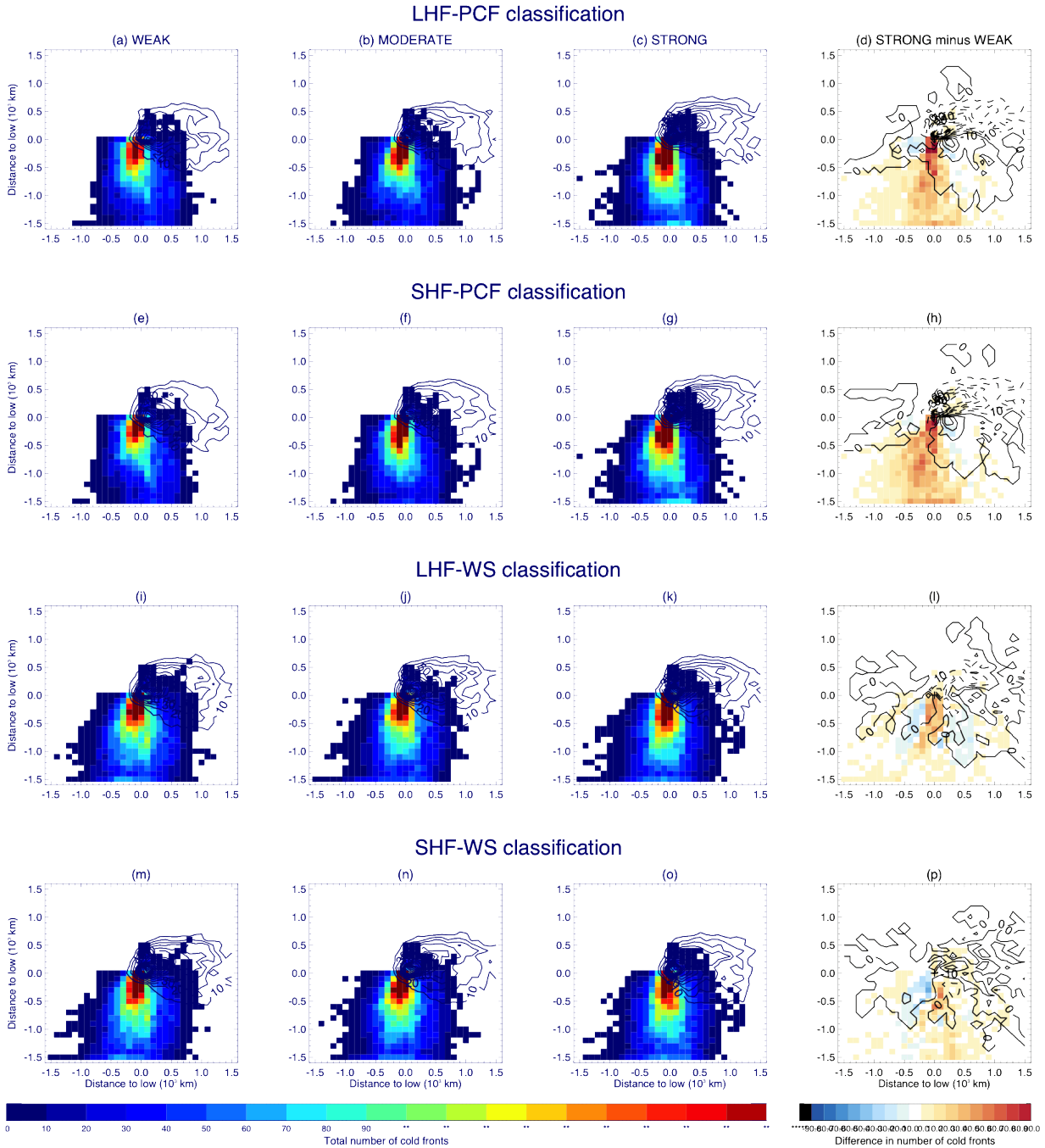


Figure S1: Composites of cold front (colored contours) and warm front (line contours) for each classification (per row) and category (weak to strong from left), with the fourth column showing the difference between strong and weak flux cyclone categories with cold front location

differences in color and warm front with line contours (dashed from positive/ solid for negative location differences).