



AMS

American Meteorological Society

Supplemental Material

Journal of Climate

Understanding Decadal-Scale Dynamics in the Bering Sea: Investigating Trends and Variability
in Sea Ice, Winds and Waves

<https://doi.org/10.1175/JCLI-D-23-0485.1>

© [Copyright 2024 American Meteorological Society](#) (AMS)

For permission to reuse any portion of this work, please contact permissions@ametsoc.org. Any use of material in this work that is determined to be “fair use” under Section 107 of the U.S. Copyright Act (17 USC §107) or that satisfies the conditions specified in Section 108 of the U.S. Copyright Act (17 USC §108) does not require AMS’s permission. Republication, systematic reproduction, posting in electronic form, such as on a website or in a searchable database, or other uses of this material, except as exempted by the above statement, requires written permission or a license from AMS. All AMS journals and monograph publications are registered with the Copyright Clearance Center (<https://www.copyright.com>). Additional details are provided in the AMS Copyright Policy statement, available on the AMS website (<https://www.ametsoc.org/PUBSCopyrightPolicy>).

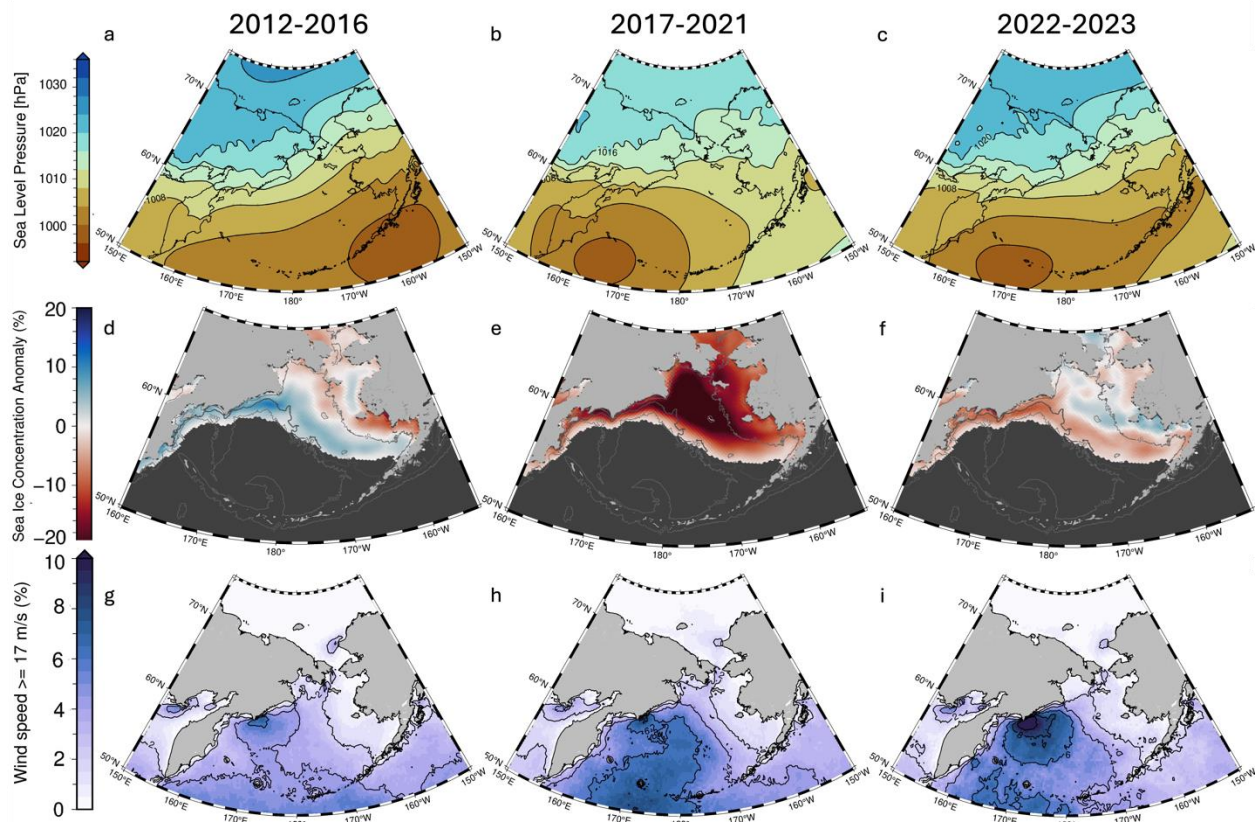


Figure S1: Sea Level Pressure (SLP), Sea Ice Concentration (SIC) and wind speed conditions in the Bering Sea 2012-2023. The analysis follows a study by Ballinger and Overland (2022) and extends it by two additional years. Mean SLP in January-March for the periods (a) 2012-2016, (b) 2017-2021 and (c) 2022-2023. Winter mean (October-April) SIC anomaly relative to the 1980-2023 long-term mean for the periods (d) 2012-2016, (e) 2017-2021 and (f) 2022-2023. Fraction of time when wind speed $\geq 17 \text{ m s}^{-1}$ (gale force winds) for the periods (g) 2012-2016, (h) 2017-2021 and (i) 2022-2023. Contours are drawn every 2%.