



**AMS**  
American Meteorological Society

## Supplemental Material

*Journal of Hydrometeorology*

Impact of Vegetation Assimilation on Flash Drought Characteristics across the Continental  
United States

<https://doi.org/10.1175/JHM-D-23-0219.1>

© [Copyright 2024 American Meteorological Society](#) (AMS)

For permission to reuse any portion of this work, please contact [permissions@ametsoc.org](mailto:permissions@ametsoc.org). Any use of material in this work that is determined to be “fair use” under Section 107 of the U.S. Copyright Act (17 USC §107) or that satisfies the conditions specified in Section 108 of the U.S. Copyright Act (17 USC §108) does not require AMS’s permission. Reproduction, systematic reproduction, posting in electronic form, such as on a website or in a searchable database, or other uses of this material, except as exempted by the above statement, requires written permission or a license from AMS. All AMS journals and monograph publications are registered with the Copyright Clearance Center (<https://www.copyright.com>). Additional details are provided in the AMS Copyright Policy statement, available on the AMS website (<https://www.ametsoc.org/PUBSCopyrightPolicy>).

## Supplementary Material

### Impact of Vegetation Assimilation on Flash Drought Characteristics Across the Continental United States

ALI FALLAH, <sup>a</sup> (ali\_fallahmaraghi@uml.edu), MATHEW A. BARLOW, <sup>a</sup>  
LAURIE AGEL, <sup>a</sup> JUNGHOON KIM, <sup>a</sup> JUSTIN MANKIN, <sup>b</sup> DAVID M.  
MOCKO, <sup>c</sup>

AND CHRISTOPHER B. SKINNER <sup>a</sup>

<sup>a</sup> University of Massachusetts Lowell, Department of Environmental, Earth and Atmospheric Sciences, Lowell, Massachusetts, <sup>b</sup> Dartmouth College, Department of Geography, Hanover, New Hampshire, <sup>c</sup> SAIC at NASA/GSFC, Greenbelt, Maryland

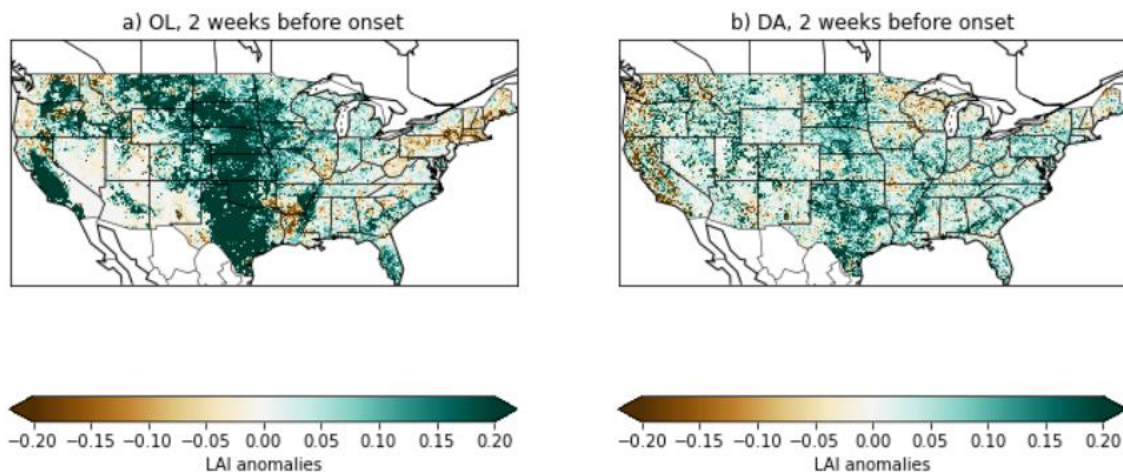


Figure S1: Composite mean of LAI anomalies 2 weeks prior to the onset of flash drought events in the (a) OL and (b) DA simulations. LAI anomalies are calculated relative to the weekly climatology.

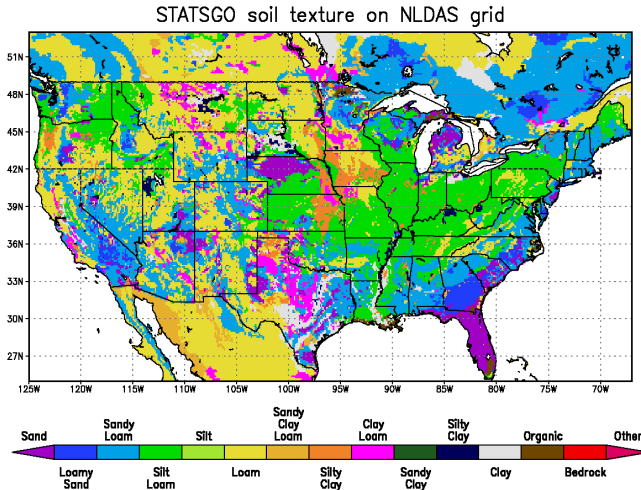


Figure S2: NLDAS soil texture types (Mitchell et al. 2004; Robock et al. 2003)

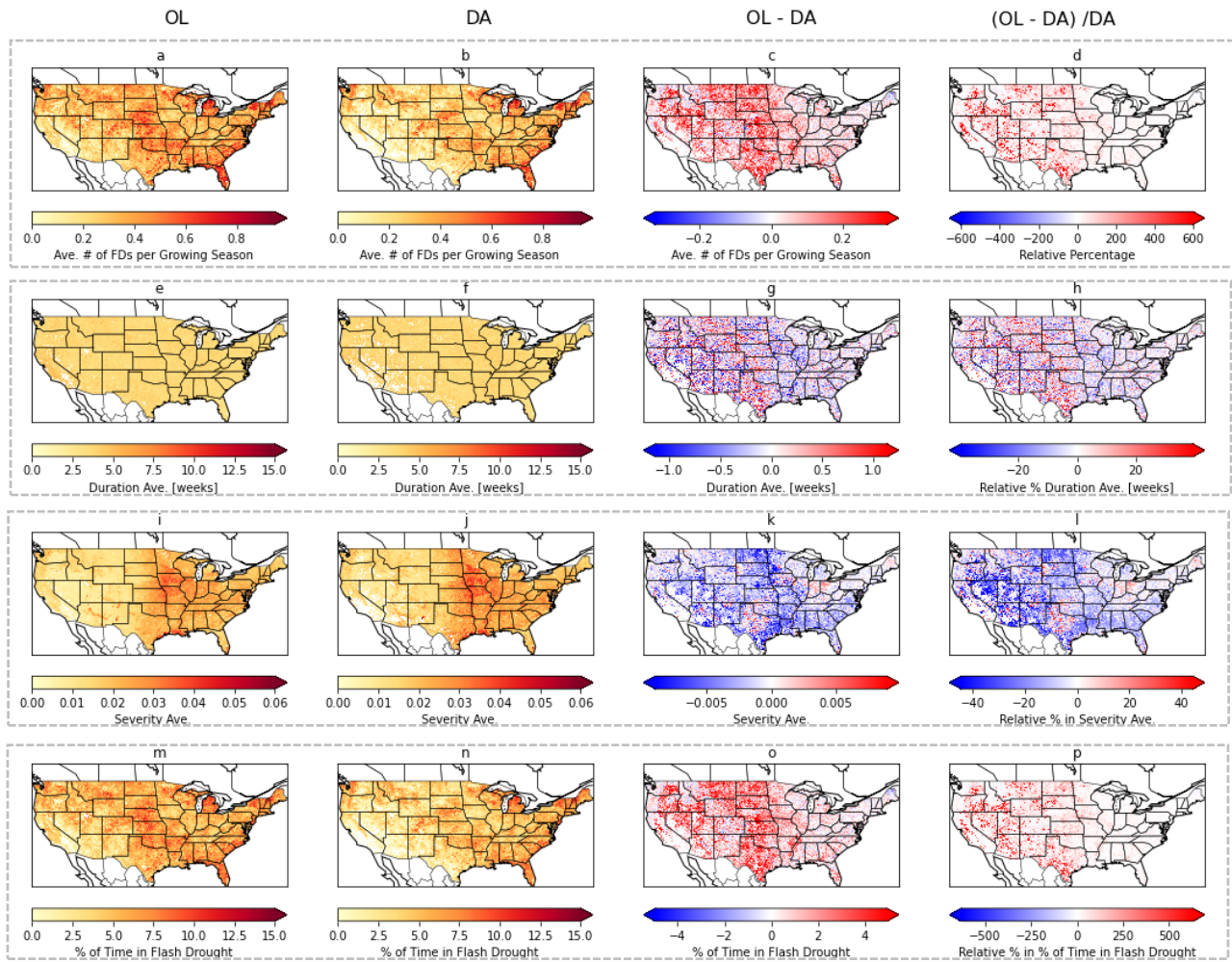


Figure S3: Similar to Figure 3 but calculated based on the onset period (see Methods) of flash drought events.

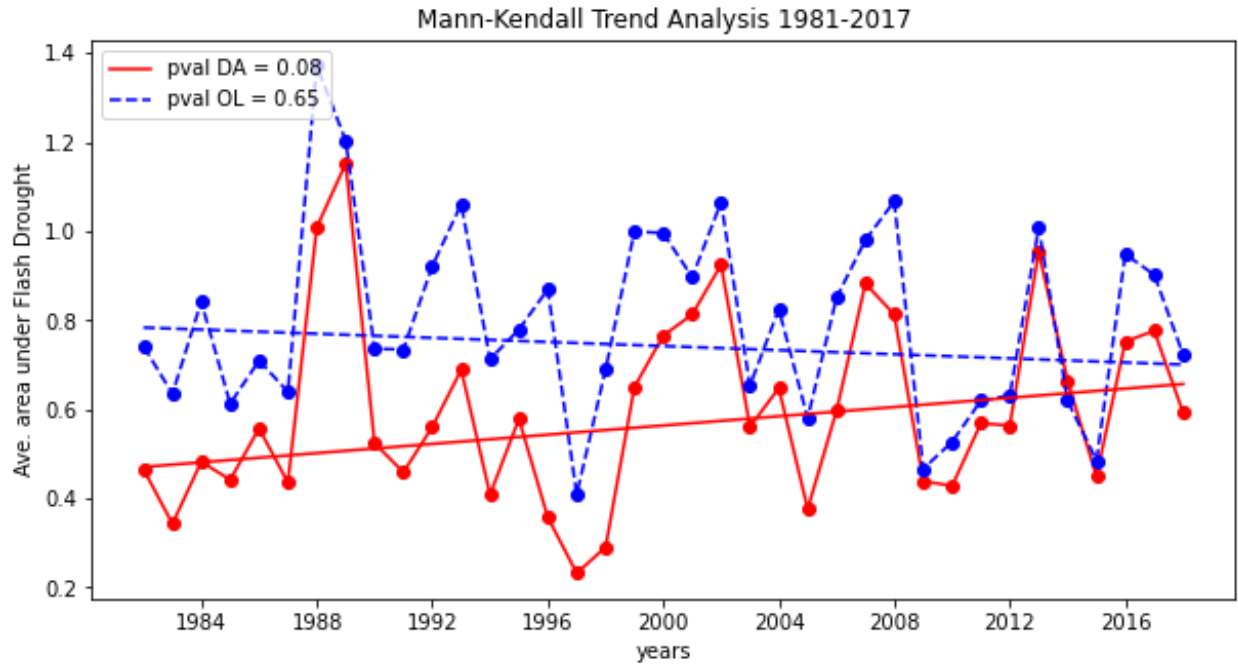


Figure S4: Similar to Figure 13 but calculated based on the onset period (see Methods) of flash drought events.

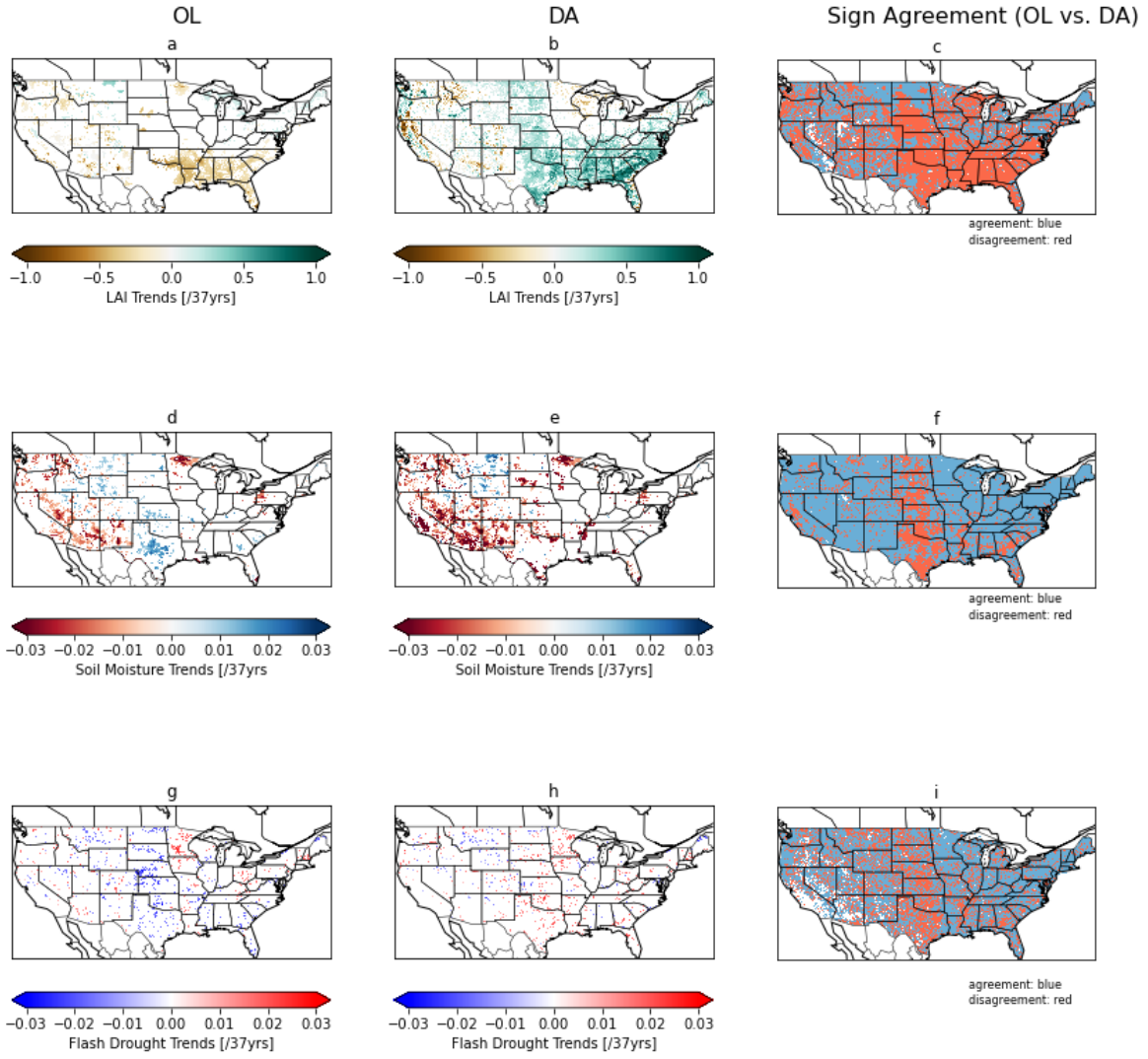


Figure S5: Similar to Figure 7 but calculated only the statistically significant trends are shown.