



**AMS**  
American Meteorological Society

## Supplemental Material

*Monthly Weather Review*

Simulating Observed Cloud Transitions in the Northeast Pacific during CSET

<https://doi.org/10.1175/MWR-D-20-0328.1>

© [Copyright 2021 American Meteorological Society](#) (AMS)

For permission to reuse any portion of this work, please contact [permissions@ametsoc.org](mailto:permissions@ametsoc.org). Any use of material in this work that is determined to be “fair use” under Section 107 of the U.S. Copyright Act (17 USC §107) or that satisfies the conditions specified in Section 108 of the U.S. Copyright Act (17 USC §108) does not require AMS’s permission. Republication, systematic reproduction, posting in electronic form, such as on a website or in a searchable database, or other uses of this material, except as exempted by the above statement, requires written permission or a license from AMS. All AMS journals and monograph publications are registered with the Copyright Clearance Center (<https://www.copyright.com>). Additional details are provided in the AMS Copyright Policy statement, available on the AMS website (<https://www.ametsoc.org/PUBSCopyrightPolicy>).

**Supplemental Material for Blossey et al, Simulating observed cloud transitions in the northeast Pacific during CSET, submitted to *Monthly Weather Review***

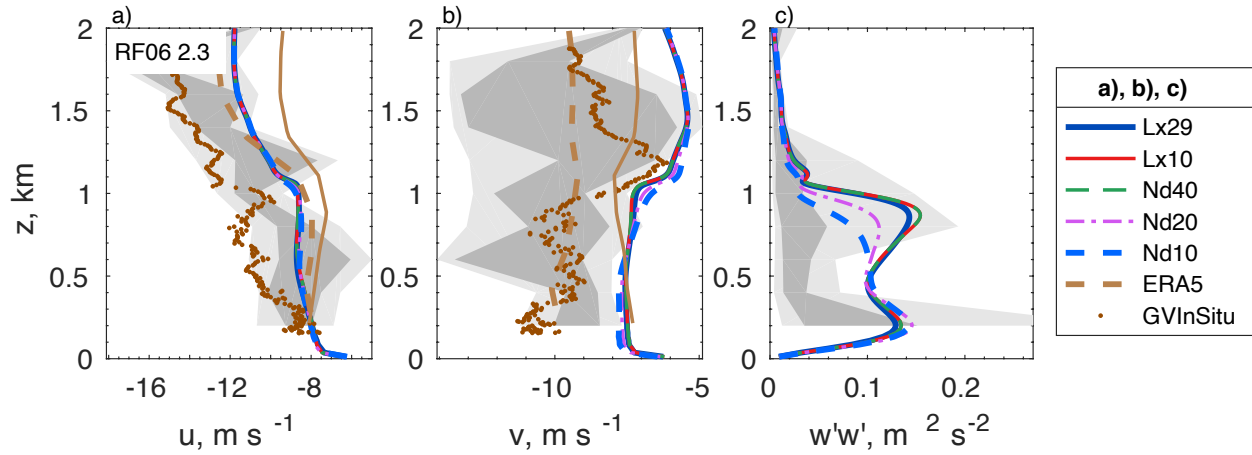


Figure S1: Profiles of a) zonal wind, b) meridional wind, and c) vertical wind variance for RF06 passage of L06 trajectory 2.3. Line types, symbols and shading are as in Figure 5, panels a-c) in the main text, except for the ERA5 geostrophic wind, which is shown by the thin, light brown line in panels a-b).

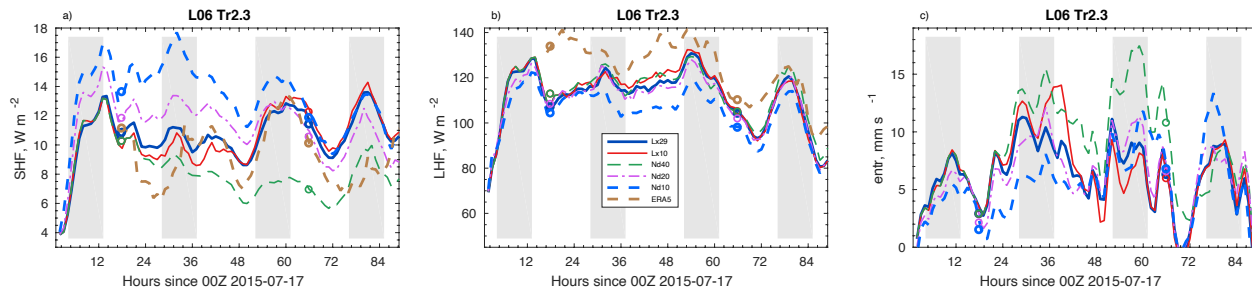


Figure S2: Timeseries of a) surface sensible heat flux, b) surface latent heat flux, and c) entrainment rate along L06 Trajectory 2.3 for simulations and ERA5. Only surface fluxes are shown for ERA5.

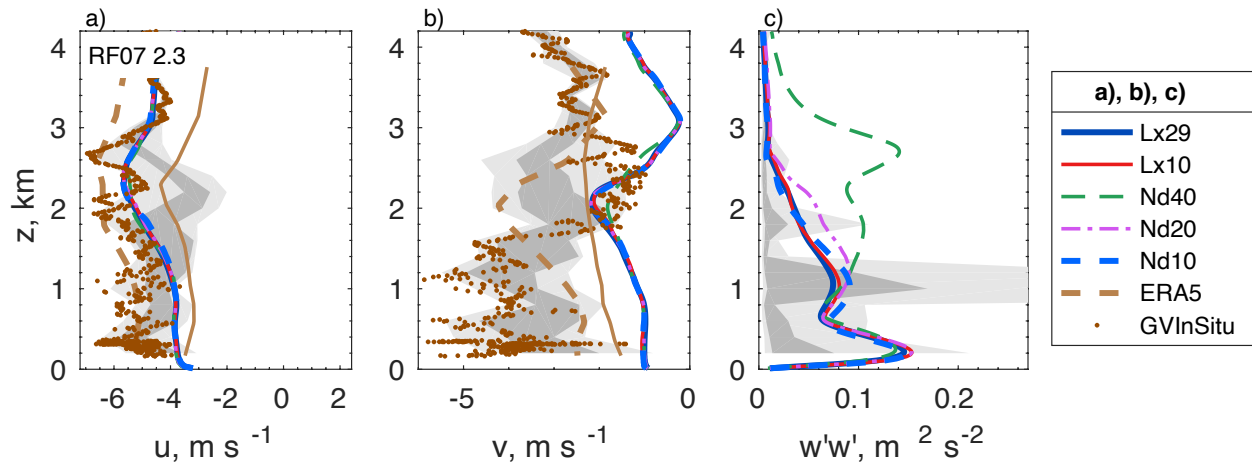


Figure S3: As in supplemental figure 1, but for RF07's passage of L06 trajectory 2.3.

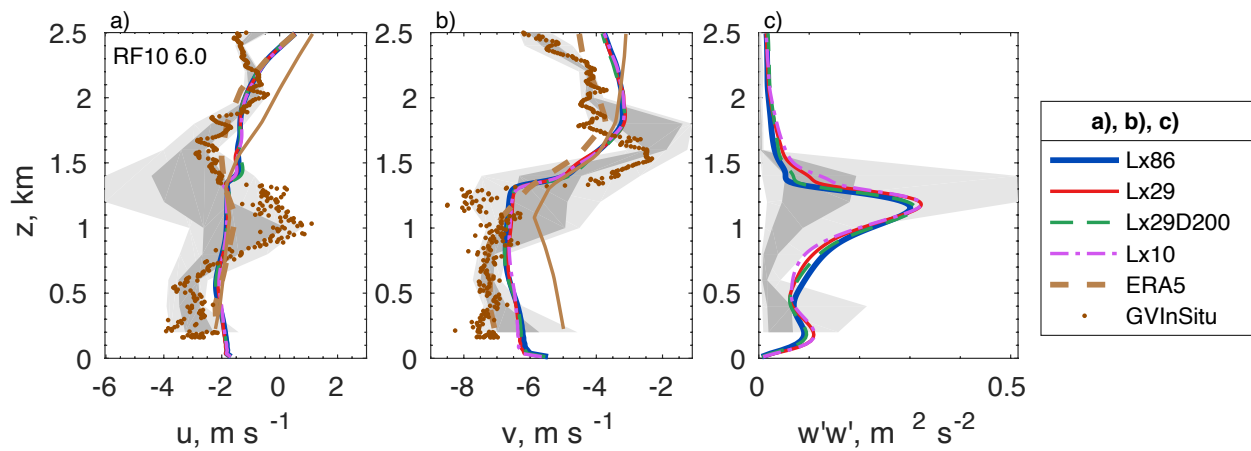


Figure S2: As in supplemental figure 1, but for RF10's passage of L10 trajectory 6.0.

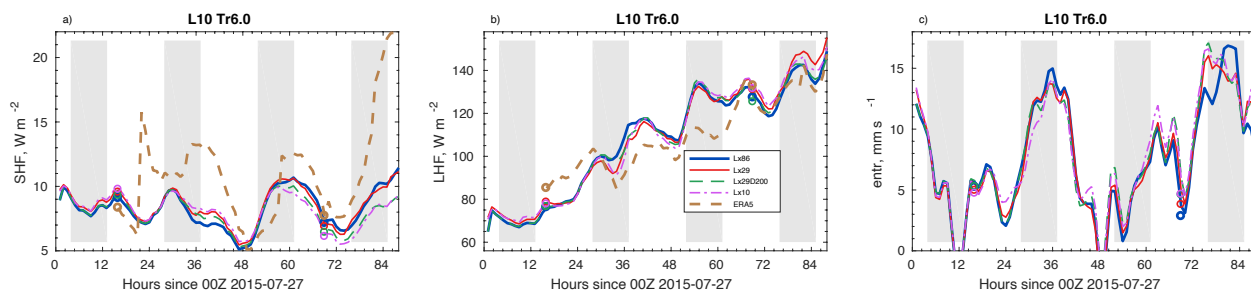


Figure S5: As in supplemental figure 2, but along L10 trajectory 6.0.

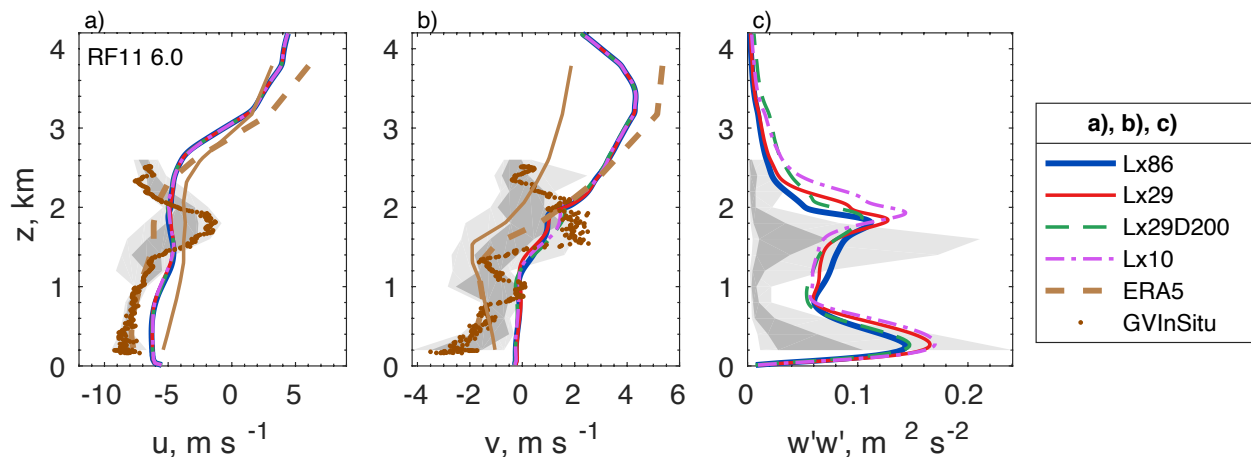


Figure S6: As in supplemental figure 1, but for RF11's passage of L10 trajectory 6.0.