

Figure 1: Potential temperatures from eastern Davis Strait moorings at 100 m. a-d) Same as Fig. 4a but for moorings C4-105, C5-105, C6-105, and WG1-105. Mooring C4-105 is at the mean depth of the BBTherW/BBArcW interface and therefore samples both regularly. Mooring C5-105, closer to Greenland, is usually below and east of the BBTherW/BBArcW interface and sampled BBTherW more in known cool Ilulissat Icefjord years. Moorings C6-105 and WG1-105 detected BBTherW only sporadically and mostly in known cool Ilulissat Icefjord years.

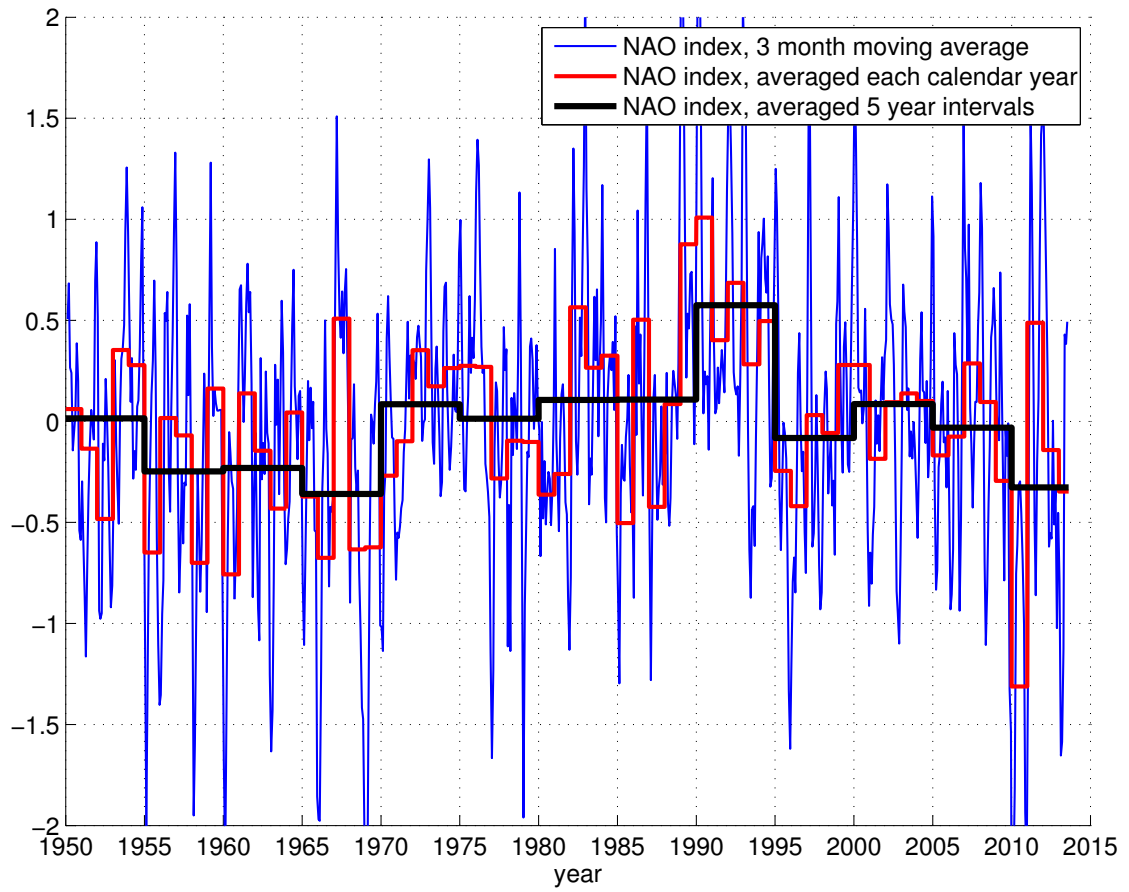


Figure 2: Principal component-based NAO index timeseries from NCAR.