



AMS

American Meteorological Society

Supplemental Material

Weather and Forecasting

Factors Influencing the Performance of Regression-Based Statistical Postprocessing

Models for Short-Term Precipitation Forecasts

<https://doi.org/10.1175/WAF-D-19-0121.1>

[© Copyright 2019 American Meteorological Society](#)

Permission to use figures, tables, and brief excerpts from this work in scientific and educational works is hereby granted provided that the source is acknowledged. Any use of material in this work that is determined to be “fair use” under Section 107 of the U.S. Copyright Act or that satisfies the conditions specified in Section 108 of the U.S. Copyright Act (17 USC §108) does not require the AMS’s permission. Republication, systematic reproduction, posting in electronic form, such as on a website or in a searchable database, or other uses of this material, except as exempted by the above statement, requires written permission or a license from the AMS. All AMS journals and monograph publications are registered with the Copyright Clearance Center (<http://www.copyright.com>). Questions about permission to use materials for which AMS holds the copyright can also be directed to permissions@ametsoc.org. Additional details are provided in the AMS Copyright Policy statement, available on the AMS website (<http://www.ametsoc.org/CopyrightInformation>).

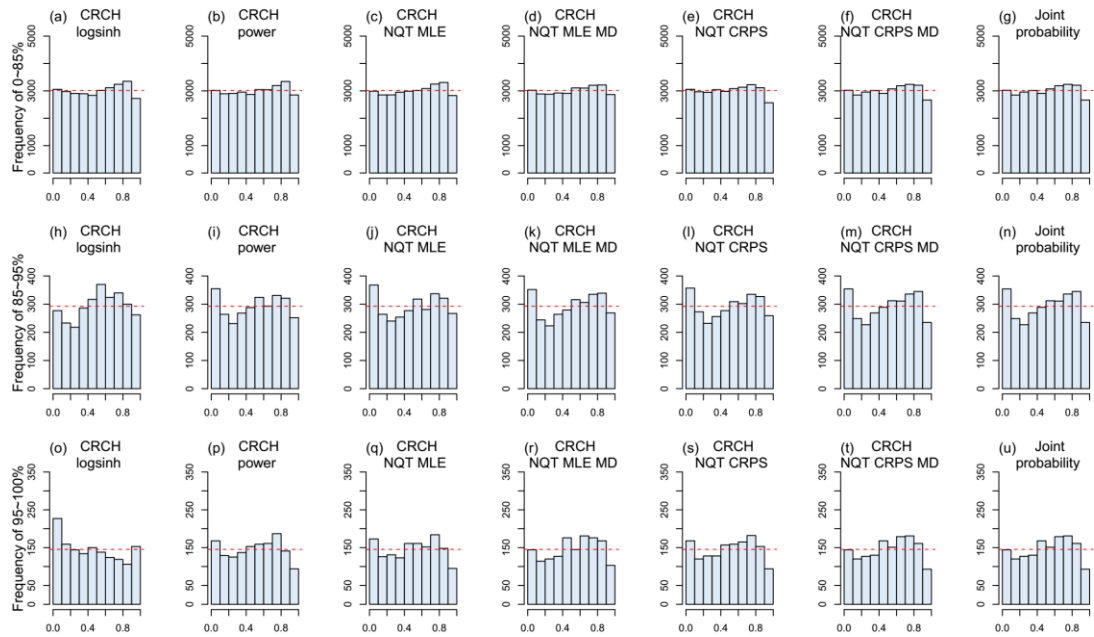


Figure S1. The stratified PIT histograms of the forecasts by seven post-processing models at the lead time of one day. (a) – (g) PIT histograms corresponding to the samples with raw forecast mean within the 0 – 85% quantiles (light rain), (h) – (n) 85% – 95% quantiles (moderate rain), and (o) – (u) 95% – 100% quantiles (heavy rain), respectively.

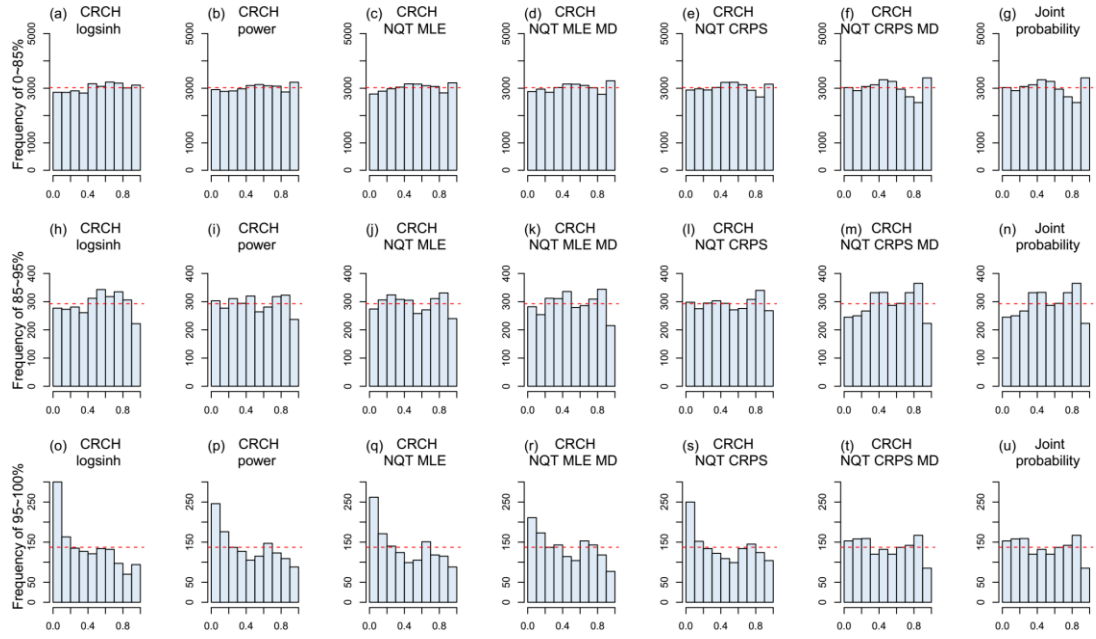


Figure S2. The stratified PIT histograms of the forecasts by seven post-processing models at the lead time of five days. (a) – (g) PIT histograms corresponding to the samples with raw forecast mean within the 0 – 85% quantiles (light rain), (h) – (n) 85% – 95% quantiles (moderate rain), and (o) – (u) 95% – 100% quantiles (heavy rain), respectively.

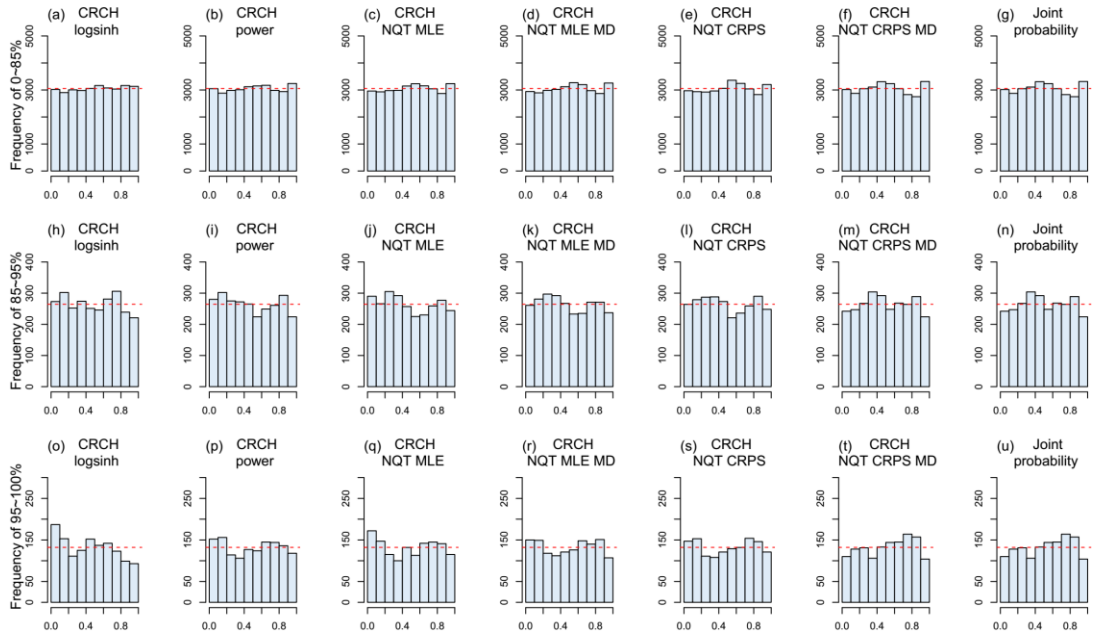


Figure S3. The stratified PIT histograms of the forecasts by seven post-processing models at the lead time of seven days. (a) – (g) PIT histograms corresponding to the samples with raw forecast mean within the 0 – 85% quantiles (light rain), (h) – (n) 85% – 95% quantiles (moderate rain), and (o) – (u) 95% – 100% quantiles (heavy rain), respectively.